

**FACTS ON  
LIBERAL  
ADULT  
EDUCATION  
IN SWEDEN**



Folkbildningsrådet

# CONTENTS

<b>Liberal adult education</b>	<b>4</b>
A Short History	5
<b>Government Subsidy for Liberal Adult Education</b>	<b>6</b>
The Decree on Liberal Adult Education	6
The Distribution of Government Subsidy 2000	9
<b>Study Associations</b>	<b>10</b>
The Divisions of Subject	11
Statistics 1999	12
11 Study Associations	13
Government Subsidy and Activity	13
<b>Folk High Schools</b>	<b>14</b>
Statistics 1999	15
147 Folk High Schools	16
Government Subsidy and Activity	18
<b>The Swedish Council of Adult Education (FBR)</b>	<b>19</b>
Tasks	19
Information Service of the Folk High Schools	19
The Members	20
The Organization	20
The Board	22
The Office	22
<b>The Popular Education Net</b>	<b>23</b>
<b>Addresses and links</b>	<b>24</b>

THE SWEDISH NATIONAL COUNCIL  
OF ADULT EDUCATION  
Stockholm, June 2000

For further information see: [www.folkbildning.se](http://www.folkbildning.se)

## LIBERAL ADULT EDUCATION

For over a hundred years Swedish people have on their own premises gathered to study, attend lectures, participate in cultural projects etc. In this way people have met each other – and continue to meet each other – to learn more, to increase their opportunities to influence their own situation and to influence and change conditions in society.

Government-supported liberal adult education is offered by study associations, which organize study circles and various cultural activities, and by the folk high schools with both long-term and short-term courses and cultural activities.

A large part of liberal adult education, both within study associations and in folk high schools, is organized in cooperation with popular movements and other organizations which are members of study associations or are responsible for folk high schools.

A certain democratic culture of dialog has been developed within liberal adult education. This means, among other things, tolerance for different opinions, and respect for arguments based on fact and for decisions taken. This is also the basis for internal work at study circles and courses, where participants have great influence in shaping and planning the course.

Liberal adult education is largely financed by the state, counties and municipalities. The government grants to educational associations and folk high schools are distributed by the Swedish National Council of Adult Education.

Beside more traditional activities like study circles, the study associations and folk high schools also run other programs commissioned by the government or by organizations.

## A SHORT HISTORY

The history of modern liberal adult education in Sweden commenced in the 19th century when the first folk high schools, libraries and lecture associations were founded, study circles started, and magazines and books on current issues were published. The different educational movements developed alongside and in cooperation with the new popular movements.

The first folk high schools were founded as early as in 1868, and the first study associations in the beginning of the 20th century.

Between the wars liberal adult education developed further with more folk high schools and study associations being founded.

The well-known concept "free and voluntary" was coined by the 1944 liberal adult education report. The report emphasized "democratic nurture", which naturally was of highest concern during the growth of totalitarian movements during the 20th century and during the wars.

During the second part of the 20th century liberal adult education expanded, while the government and parliament at the same time changed the conditions for grants for high schools and educational associations. The latest great change was in 1991 with a new Decree on Government Subsidy for liberal adult education (see below), which meant that government-supported liberal adult education became defined by objectives instead of rules.

# GOVERNMENT SUPPORT TO LIBERAL ADULT EDUCATION

A fundamental reason for public support to liberal adult education is to foster democratic development in society. The conditions for government grants to liberal adult education are stated in the "Decree on Government Subsidy for Liberal Adult Education":

## Decree on Government Subsidy for Liberal Adult Education

### Prefatory regulations

1 § In accordance with this decree government subsidies can be granted towards folk high schools and study associations. Issues concerning such subsidies are handled by the Swedish National Council of Adult Education.

The Swedish National Council of Adult Education shall also perform other tasks according to this decree.

### The aims of the government subsidy

2 § The government subsidies to liberal adult education shall aim at

1. furthering activities that empower women and men to shape their lives and create commitment for taking part in developing society,
2. strengthening and developing democracy,
3. broadening cultural interest in society, increasing participation in cultural life and furthering the enjoyment of cultural events and people's own creativity.

Activities that aim at filling educational gaps and raising the educational level in society should be given priority, as well as activities that are geared for

educationally, socially and culturally disadvantaged people. Particularly important target groups for government subsidies are people of foreign descent, physically or mentally dysfunctional participants and the unemployed.

### The tasks of the Swedish National Council of Adult Education

3 § The Swedish National Council of Adult Education shall decide on whom will be granted government subsidies according to this decree and distribute available funds between them.

The Swedish National Council of Adult Education shall yearly hand in annual financial reports and the basic data for budgeting to the government. In doing so the Council shall follow the regulations and indications imparted by the government.

The Council shall continuously follow up and evaluate the activities in relation to the objectives elaborated under § 2 and the conditions given for government subsidies.

4 § The Council shall, in accordance with rules and regulations issued by the government, supply the government with factual information about the activities and activity reports that are deemed necessary to enable follow-up and evaluation of the activities.

### Conditions for government subsidies

5 § The activities shall have the character outlined in the first paragraph of § 2.

Government subsidies must not be used for activities of a commercial character.

### Special conditions for government subsidies to folk high schools

6 § Every folk high school must have an accountable board. Two or more folk high schools can share the same board.

General courses, designed mainly for those who lack primary or high school (upper secondary) education, shall each year make up at least 15 per cent of the total volume of activity.

A general course leading to qualifications corresponding to those obtainable in the compulsory school system may only accept students over the age of 18, or students that will reach the age of 18 during the calendar year in which the course commences. This notwithstanding folk high schools may accept students under the age of 18, if that person is attending an individual high school (upper secondary) program.

7 § Teaching shall be free of charge.

### Special conditions for government subsidies to study associations

8 § Study circles characterized by joint and regular studies shall constitute the bulk of the activities.

Each study circle or cultural activity should be led by a leader authorized by a local branch of a study association.

### Decisions on government subsidies

9 § Decisions on government subsidies must state the amount of money, conditions linked to the subsidies and rules for disbursement of the money.

...

## DISTRIBUTION OF GOVERNMENT SUBSIDIES IN 2000

The distribution of government subsidies for liberal adult education by the Swedish National Council for Adult Education in 2000:

<u>Purpose</u>	SEK
<b>Study associations</b>	<b>1 199 704 000</b>
General subsidy	1 197 684 000
The Swedish National Federation of Study Associations	2 020 000
<b>Folk High Schools</b>	<b>1 263 395 000</b>
General subsidy	788 203 000
Extra subsidy, handicap	122 500 000
Special Education Effort	346 892 000
The Information Service of the Folk High Schools	5 000 000
Further training for folk high school personnel	800 000
<b>Experimental work within study associations and folk high schools</b>	<b>10 000 000</b>
<b>The Swedish National Council of Adult Education</b>	<b>15 450 000</b>
<b>TOTAL</b>	<b>2 488 549 000</b>

## STUDY ASSOCIATIONS

Today there are eleven study associations receiving government grants (see page 9). Each study association has a more or less marked profile depending on which popular movements/organizations are members in the association.

Altogether the eleven study associations have over 270 member organizations. The study associations also have central cooperation agreements with another 60-plus organizations and cooperate locally with a number of different associations.

The study circle is the most common form of activity characterizing the study associations. The study circles offer different subjects according to the wishes of the participants etc. Every year about 336 000 circles are organized all over the country. (Since many people participate in more than one circle per year the real number of participants is estimated to between one and a half million to two million.)

Cultural programs of different kinds constitute the second largest area of activity of the study associations. Over 200 000 programs are arranged every year with over 18 000 000 visitors/participants.

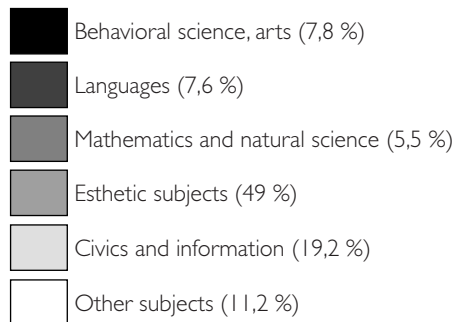
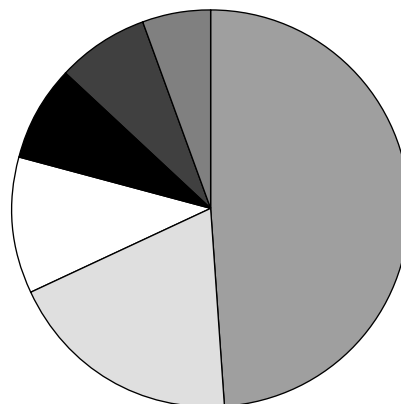
During 1999 the eleven study associations organized more than 45 000 arrangements with more than half a million participants within the field called other liberal adult education activities.

Each study association consists of a number of units (local departments) och local offices, in total close to 900. These organize the study circles, cultural programs, other liberal adult education activities etc – partly for anyone interested, partly for members of each study association's member organizations.

## DISTRIBUTION OF SUBJECTS IN THE STUDY CIRCLES

Esthetic subjects constituted almost half of the study circle activities in 1999, according to the number of study hours. There were only minor changes compared to the previous year.

The total number of study hours were 12 853 000 in 1999, equivalent to ca 336 000 study circles.



## Annual 1998 report of the II study associations

<b>Study circles</b>	<b>Circles</b>	<b>Participants</b>	<b>Women</b>	<b>Study hours</b>
1998	336 096	2 844 288 *	1 623 937	12 852 823
1998	331 817	2 815 679 *	1 612 262	12 458 081
<b>Cultural programs</b>	<b>Events</b>	<b>Participants</b>	<b>Contributors</b>	
1998	203 662	17 992 584	1 046 627	
1998	185 562	16 275 686	1 024 682	
<b>Other activities</b>	<b>Events</b>	<b>Participants</b>	<b>Women</b>	<b>Study hours</b>
1998	45 471	540 664	254 288	749 940
1998	40 386	503 249	247 075	712 937

\* Considering the fact that a large number of people participate in several circles the estimated figure of participants in 1999 is between 1,5 and 2 million.

## II STUDY ASSOCIATIONS

Workers' Education Ass. (ABF)	+468 613 5000
Folkuniversitetet (FU)	+468 679 2950
Educational Ass. of the NonConformist Churches in Sweden (FS)	+468 727 1710
The YWCA/YMCA Adult Education Ass.	+468 727 1740
The Citizens' Adult Education Ass.	+4618 569500
The Educational Ass. of the Sobriety Movement (NBV)	+468 672 6100
The Study Promotion Ass.	+468 545 70700
Adult Education Ass. (sv)	+468 587 68600
Swedish Sport Confederation Adult Education Ass. (SISU)	+468 605 6000
Swedish Christian Education Ass. (SKS)	+468 727 1750
The Educational Ass. of Professional Employees (TBV)	+468 782 9300

### Study circle hours through the general government grant:

Fiscal year	General subsidy	Number om study hours
1992/93	1 056 019 000	10 481 800
1993/94	1 098 736 000	10 910 497
1994/95	1 068 828 000	11 405 238
1995/96*	1 678 156 000	18 001 398
1997	1 106 929 000	12 327 476
1998	1 140 299 500	12 458 081
1999	1 182 397 100	12 852 823

\* 1995/96 covers an 18-month period.

Note. Besides the study circle activities, the study associations arrange cultural programs and other activities. The number of cultural programs in 1992 was around 88 000, for 1998 186 000.

## FOLK HIGH SCHOOLS

Altogether there are 147 folk high schools around the country today. The folk high school is a school for adults with a lowest age limit of 18 years for the general courses. The schools give priority to applicants with little schooling.

The folk high school is free to shape its courses according to the special interests and profile of the school, thereby giving the students great opportunities for influencing the direction and contents of the courses in accordance with earlier knowledge, interests, and needs.

Characteristic of the education is theme studies and projects. In these the social and work experiences of the participants are a great resource.

The folk high schools give courses at different levels and with different aims. The long-term courses last from one semester up to one or several years. All education is free of charge and government grants can be applied for.

The general course, which qualifies a person for university studies, is an important part of the educational system, and is available at all folk high schools. Each semester there are more than 18 000 students enrolled in the general course.

The folk high schools also offer specialized courses, e.g. in music, media, arts and handicraft, theater and languages, in which a greater part of the time is devoted to the special area of one's choice. Some of these courses are vocational: recreation leader, drama teacher, journalist, cantor etc. The number of participants in the special courses is about 11 000.

Also the folk high schools have about 75 000 students taking part in short-term courses of different kinds each semester.

### Yearly activities of the 147 folk high schools in 1999

TYPE OF COURSE	NUMBER OF WEEKS		PARTICIPANTS		WOMEN	
	1999	1998	VT-99	HT-99	VT-99	HT-99
1 General course	257 047	268 845	8 368	7 549	5 383	4 858
2 Special course	358 884	345 206	10 523	11 701	6 566	7 574
<b>Total long-term courses</b>	<b>615 931</b>	<b>614 051</b>	<b>18 891</b>	<b>19 250</b>	<b>11 949</b>	<b>12 432</b>
3 Short courses	103 320	98 341	75 481	83 609	43 125	47 873
Study circles	4 929	4 309	1 849	1 844	1 200	1 171
4 Special efforts	330 560	327 989	9 479	9 720	6 127	6 199
<b>Total 1-4</b>	<b>1 044 960</b>	<b>1 044 960</b>	<b>105 700</b>	<b>114 423</b>	<b>62 401</b>	<b>67 675</b>

Note: These folk high schools courses are financed by government grants. The schools also give courses financed by other means.

## 147 FOLK HIGH SCHOOLS

<b>Norrbottnens län:</b>	Västernorrland	0247-64100
Framnäs	0911-231100	
Kalix	0923-66610	
Malmfälten	0980-67500	
Pitedalen	0929-72300	
Sunderby	0920-266600	
Sverigefinska	0922-12905	
Tornedalen	0927-10820	
<b>Västerbottnens län:</b>	Västmanland	
Dalkarlså	0934-30495	
Edelvik	0914-10160	
Medlefors	0910-57500	
Solvik	0910-732000	
Storuman	0951-77730	
Strömbäck	090-42600	
Vindeln	0933-13600	
<b>Jämtlands län:</b>	Jämtland	
Birka	063-147400	
Bäckedal	0680-16670	
Hälland	0647-665500	
<b>Västernorrlands län:</b>	Västernorrland	
Hampnäs	0660-378125	
Höla	0612-85600	
Härnösand	0611-554600	
Mellansel	0661-654400	
Ålsta	0691-31250	
<b>Dalarnas län:</b>	Dalarna	
Brunnsvik	0240-667300	
Fornby	0243-239550	
Företagarnas	0247-13540	
Malung	0280-14300	
Mora	0250-71376	
Sjövik	0226-67800	
<b>Västanvik</b>	0247-64100	
<b>Gävleborgs län:</b>	Gävleborg	
Bollnäs	0278-24020	
Forsa	0650-541100	
Färnebo	0291-20275	
PRO	0291-21220	
Västerberg	0290-31100	
<b>Värmlands län:</b>	Värmland	
Geijerskolan	0552-30250	
Ingensund	0570-38550	
Klarälvdalen	0563-81220	
Kristinehamn	0550-39250	
Kyrkerud	0573-10002	
Molkom	0553-10004	
<b>Uppsala län:</b>	Uppsala	
Nordens Biskops-Arnö	0171-52260	
Wik	018-561080	
<b>Stockholms län:</b>	Stockholm	
Alma	08-4621100	
Birkagården	08-205650	
Bosön	08-6056600	
Botkyrka	08-53191505	
Dalarö	08-50150710	
Hagaberg	08-55091000	
Jakobsberg	08-58030444	
Kaggeholm	08-56022000	
Lidingö	08-6362300	
Lillsved	08-54138530	
Långbro	08-880530	
Långholmen	08-6581630	
Rinkeby	08-4457110	
Runö	08-55538000	

S:ta Birgitta	08-7021606	FiA-fhsk i Angered	
Sigtuna	08-59258243		031-3319900
Skarpnäck	08-6831830	Finska	031-3315066
Skeppsholmen	08-6792800	Fristad	033-236800
Stadsmissionen	08-7878695	Grebbestad	0525-10407
Sundbyberg	08-4453900	Göteborg	031-7697600
Tollare	08-7150030	Helliden	0520-17800
Vårdinge By	0158-23058	Helsjön	0320-80620
Väddö	0176-52800	Hjälmarred	0322-13969
Västerhaninge	08-50066930	Kvinnofolkhögskolan	
			031-7756500
<b>Västmanlands län:</b>	Västmanland	Ljungskile	0522-686900
Hästsporten	0220-45100	Nordiska	0303-206200
Skinnskatteberg		Skara stift	0503-32300
	0222-44400	Vara	0512-57970
Tärna	0224-21230	Wendelsberg	031-3380530
Västerås	021-140705	Viskadalén	0320-18300
<b>Örebro län:</b>	Örebro	<b>Östergötlands län:</b>	
Fellingsbro	0581-620052	Bona	0141-209580
Hällefors	0591-64390	Liljeholmen	0494-79700
Karlskoga	0586-64600	Lunnevad	013-234900
Kävesta	019-6024950	Marieborg	011-219600
Örebro	019-157658	Mo Gård	0122-23633
		Vadstena	0143-13710
		Valla	013-355580
<b>Södermanlands län:</b>	Södermanland	<b>Gotlands län:</b>	
Eskilstuna	016-513110	Gotland	0498-203650
Kjesäter	0151-518600	<b>Kalmar län:</b>	
Nyköping	0155-292080	Gamleby	0493-13100
Röda Korset	0159-36100	Högalid	0480-84480
Stensund	0156-53200	Oskarshamn	0491-13540
Åsa	0157-6027658	Vimmerby	0492-14300
		Öland	0485-38210
<b>Västra Götalands län:</b>	Västra Götaland	<b>Jönköpings län:</b>	
Arbetarrörelsen	031-7119191	Braheskolan	0390-56600
Axevall	0511-26970		
Billströmska	0304-660005		
Dalsland	0528-10017		

Mariannelund	0496-21550	Litorina	0455-25400
Mullsjö	0392-37400	Valjeviken	0456-15115

Sommenbygden 0140-53790

Södra Vätterbygden		<b>Skåne län:</b>	
	036-306900	Eslöv	0413-10052
Sörången	0380-10645	Fridhem	0418-446000

Vieback	0380-663000	Furuboda	044-7814600
---------	-------------	----------	-------------

Värnamo	0370-694800	Glimåkra	044-44800
---------	-------------	----------	-----------

Ådelfors	0383-57100	Hvilan	040-464400
----------	------------	--------	------------

		Hyllie Park	040-375950
--	--	-------------	------------

		Kvarnby	040-599490
--	--	---------	------------

		Malmö	040-6715100
--	--	-------	-------------

<b>Kronobergs län:</b>		Nordvästra Skåne	
------------------------	--	------------------	--

Grimslöv	0470-750410		
----------	-------------	--	--

Markaryd	0433-74511		0431-432010
----------	------------	--	-------------

S:t Sigfrid	0470-724082	S:ta Maria	040-223113
-------------	-------------	------------	------------

		Skurup	0411-40587
--	--	--------	------------

<b>Hallands län:</b>		Sundsgården	042-193800
----------------------	--	-------------	------------

Katrineberg	0346-57500	Önnestad	044-70004
-------------	------------	----------	-----------

Löftadalen	0340-655000	Örenäs	0418-70230
------------	-------------	--------	------------

		Österlen	0417-78440
--	--	----------	------------

		Östra Grevie	040-487600
--	--	--------------	------------

<b>Blekinge län:</b>			
----------------------	--	--	--

Blekinge	0457-80060		
----------	------------	--	--

Jämshög	0454-46340		
---------	------------	--	--

**The folk high school activities carried out through the support of the general government grant:**

Fiscal year	General government grant	Number of weeks attended
1992/93	694 005 000	685 795
1993/94	704 765 000	744 945
1994/95	710 535 000	758 379
1995/96*	1 112 954 000	1 089 433
1997	733 659 000	734 323
1998	757 027 500	716 701
1999	788 203 000	724 180

\* an 18-month period 1995/96.

## THE SWEDISH NATIONAL COUNCIL OF ADULT EDUCATION



The Swedish National Council of Adult Education was founded in 1991 and is a non-profit organization with three members: The National Federation of Study Associations, The Federation of County Councils, and The Interest Organization for Popular Movement Folk High Schools (RIO).

The Council distributes grants to the study associations and folk high schools, submits budget and fiscal reports, follows up and evaluates the popular-education activities, and administers the Popular Education Net, a digital platform for learning, conferences etc. – see page . The Council is entrusted with these tasks by the government and parliament.

The Swedish National Council of Adult Education also works with the following on behalf of its members:

- ☛ monitoring liberal adult education policies,
- ☛ information,
- ☛ coordination of international contacts.



The Information Service of the Swedish Folk High Schools (FIN) is part of the Swedish National Council of Adult Education and is a joint information center for the folk high schools, which is responsible for general and collected data on all 147 folk high schools. FIN produces and distributes course catalogs and information material on the folk high schools and gives information on folk high school studies and counselling.

## THE MEMBERS OF THE SWEDISH NATIONAL COUNCIL OF ADULT EDUCATION

The members of the Swedish National Council of Adult Education are:

**The National Federation of Study Associations (FBF)**, which is an interest organization for the eleven study associations.

**The Interest Organization for Popular Movement Folk High Schools (RIO)** with popular movements and other organizations as principals.

**The Federation of County Councils (Lf)**, representing the county-run folk high schools.

## THE ORGANIZATION OF THE SWEDISH NATIONAL COUNCIL OF ADULT EDUCATION

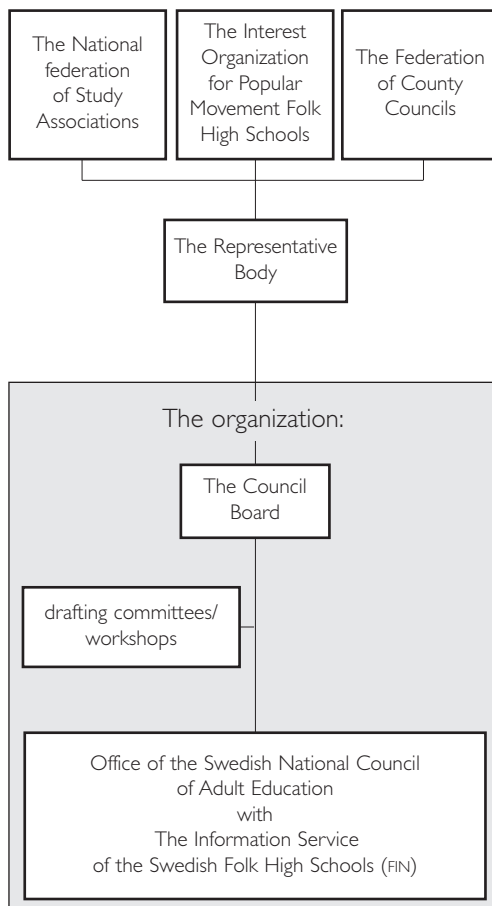
**The Representative Body**, the highest executive body which meets yearly.

**The Council Board** is elected for two years and operates the offices (see next page).

The Information Service of the Swedish Folk High Schools (FIN, see next page) is also part of the **Office of the Swedish National Council of Adult Education**.

When needed, drafting committees meet and workshops are set up.

The members:



## THE BOARD

BO TORESSON (Chairman).

KENT JOHANSSON, Regional Advisor.

STAFFAN LARSSON, Professor.

LEIF LINDE, Director General.

JOHNNY NILSSON, County Supervisor.

KARIN PERERS, Writer.

LEIF PETTERSSON, School Director.

WALTER RÖNMARK, EU-Coordinator.

SVERKER ÅGREN, Social Studies Graduate.

Additional members are ÅKE GÖRANSSON, Chairman of the Interest Organization of Popular Movement Folk High Schools, BERIT OSCARSSON, Chairman of the Swedish National Federation of Study Associations, samt ULF WETTERBERG, Director of the Federation of County Councils.

## THE OFFICE (+46 8 412 48 00)

BRITTEN MÅNSSON-WALLIN, Administrative Director.

LASSE MAGNUSSON, Secr. of Liberal Adult Education.

ERIC R PERSSON, Administrative Secretary.

PAUL NORÉN, Economist.

LOTTA RAGELIUS, Accountant.

ANNE-CHRISTINE UTTERSTRÖM, R&D Secretary.

ANNA-CARIN BYLUND, Study Association Secretary.

SIGNILD HÅKANSSON, Folk High School Secretary.

KARIN FRIBORG, Service.

BJÖRN GAREFELT, the Popular Education Net.

TORE PERSSON, the Popular Education Net.

Folkhögskolornas informationstjänst (FIN):

INGRID BRUNDIN, Secretary of Information.

LOTTA SANDIN, Assistant Secretary of Information.

AGNETA WALLIN, Counselor/Information Office.

PER ÅMAN, Clerk.

## THE POPULAR EDUCATION NET



The Popular Education Net is a digital meeting place for study associations and folk high schools – open to employees, elected representatives and participants. The net is used for:

- taking part in different discussions, either in the open conferences or in the restricted access conferences (members of boards, participants in projects, participants in study circles or courses, etc.),
- getting in contact with people engaged in liberal adult education,
- sending and receiving personal e-mail,
- obtaining up-to-date information on liberal adult education, from, for example, the catalog called "Folkbildningsrådets info" (information from the Swedish National Council of Adult Education).
- and – not least – the net is used as a pedagogical aid for folk high school courses, study circles etc.

A certain number of study associations and folk high schools are using the Popular Education Net to arrange different kinds of distance study programs within liberal adult education, for, among others, people who for different reasons cannot meet regularly in person. This category consists of people living in the countryside, people working shift, disabled persons, and parents.

## ADRESSER

### The Swedish National Council of Adult Education

Box 730, 101 34 Stockholm tel: +46 8 412 48 00  
fbr@folkbildning.se fax: +46 8 21 88 26  
www.folkbildning.se

### The Information Service of the Folk High Schools

Box 730, 101 34 Stockholm tel: +46 8 796 00 50  
fin@folkbildning.se fax: +46 8 21 88 26  
www.fin.fhsk.se

### The National Federation of Study Associations

Box 730, 101 34 Stockholm tel: +46 8 412 48 50  
fbf@folkbildning.se fax: +46 8 21 88 26  
www.folkbildning.org

### The Interest Organization of Popular Movement Folk High Schools

Box 730, 101 34 Stockholm tel: +46 8 412 48 90  
rio@folkbildning.se fax: +46 8 21 88 26  
www.folkbildning.net/~rios.hemsida

### The Federation of County Councils

Box 70491, 107 26 Stockholm tel: +46 8 702 43 00  
landstingsforbundet@lf.se fax: +46 8 702 45 90  
www.lf.se

Please also see the telephone numbers of the different study associations (s. 13), folk high schools (s. 16-18), the county councils of adult education (s. 25) and to the office of the Swedish National Council of Adult Education (s. 22).

## THE COUNTY COUNCILS OF ADULT EDUCATION

The main task of the County Councils of Adult Education is to promote and coordinate liberal adult education, as well as acting as regional bodies of the Swedish National Council of Adult Education. Members consist of study associations, folk high schools and other regional cultural institutions.

Stockholms län	+46 8 641 90 65
Uppsala län	+46 18 15 54 30
Södermanlands län	+46 157 511 55
Östergötland	+46 13 31 52 75
Jönköpings län	+46 36 19 00 40
Kronobergs län	+46 450 814 75
Kalmar län	+46 492 158 91
Gotland	+46 498 21 83 61
Blekinge län	+46 457 810 25
Skåne	+46 46 38 40 30
Halland	+46 346 17 77 70
Västra Götaland	+46 511 134 65
Värmlands län	+46 54 22 15 40
Örebro län	+46 19 611 21 75
Västmanlands län	+46 21 18 35 71
Dalarna	+46 243 678 32
Gävleborgs län	+46 26 65 31 20
Mittnorrland	+46 63 18 13 13
Västerbottens län	+46 90 12 68 00
Norrbottnen	+46 920 680 65

## LINKS

More information can be found at a number of web sites on the Internet:

❑ [www.folkbildning.se](http://www.folkbildning.se) – The Swedish National Council of Adult Education, with information on the Council and general information on liberal adult education, including current regulations and other news from the government and parliament (here you will also find links to study associations, folk high schools, etc.).

❑ [www.fin.fhsk.se](http://www.fin.fhsk.se) – The Information Service of the Folk High Schools, with information on courses given by the schools etc. and links to each school.

❑ [www.folkbildning.org](http://www.folkbildning.org) – The National Federation of Study Associations, with for example links to each study association (where you can find further links to local associations and districts within each study association).

❑ [www.liu.se/org/vuxcen/](http://www.liu.se/org/vuxcen/) – The Center for Adult Education at the University of Linköping.

❑ [www.liu.se/ipp/mimer](http://www.liu.se/ipp/mimer) – Mimer, The National Program for Research on Liberal Adult Education.

❑ [www.sisus.se](http://www.sisus.se) – The Government Institute for Special Educational Support, for the disabled.

❑ [www.distum.se](http://www.distum.se) – the distans education authority.

General information in English and some other languages on Swedish liberal adult education can be found at the web site of the Swedish National Council of Adult Education ([www.folkbildning.se](http://www.folkbildning.se)).

Information in English on the Swedish educational system, incl. adult education, can be found at: [www.eurydice.org/Eurydice/Files/swen/swen.htm](http://www.eurydice.org/Eurydice/Files/swen/swen.htm).

## LIBERAL ADULT EDUCATION IN SWEDEN

Eleven study associations which every year all over the country organize:

- ☛ about 336 000 study circles with more than one and a half million participants,
- ☛ over 200 000 cultural programs with almost 18 million visitors/participants.

147 folk high schools which have:

- ☛ almost 30 000 participants in long-term courses,
- ☛ about 150 000 participants in short courses.

THE SWEDISH NATIONAL COUNCIL  
OF ADULT EDUCATION

Box 730, 101 34 Stockholm

Tel: +46 8 412 48 00, fax: +46 8 21 88 26

E-post: [fbr@folkbildning.se](mailto:fbr@folkbildning.se)

[www.folkbildning.se](http://www.folkbildning.se)