

**FACTS ON
LIBERAL
ADULT
EDUCATION
IN SWEDEN**



Folkbildningsrådet

CONTENTS

Liberal adult education	4
A Short History	5
Government Subsidy for Liberal Adult Education	6
The Decree on Liberal Adult Education	6
The Distribution of Government Subsidy 2003	9
Study Associations	10
The Divisions of Subject	11
Statistics 2002	12
10 Study Associations	13
Government Subsidy and Activity	13
Folk High Schools	14
Statistics 2002	15
147 Folk High Schools	16
Government Subsidy and Activity	18
The Swedish Council of Adult Education (FBR)	19
Tasks	19
Information Service of the Folk High Schools	19
The Members	20
The Organization	20
The Board	22
The Office	22
The Popular Education Net	23
Addresses and links	24

THE SWEDISH NATIONAL COUNCIL
OF ADULT EDUCATION
Stockholm, May 2003

For further information see: www.folkbildning.se

LIBERAL ADULT EDUCATION

For over a hundred years Swedish people have on their own premises gathered to study, attend lectures, participate in cultural projects etc. In this way people have met each other – and continue to meet each other – to learn more, to increase their opportunities to influence their own situation and to influence and change conditions in society.

Government-supported liberal adult education is offered by study associations, which organize study circles and various cultural activities, and by the folk high schools with both long-term and short-term courses and cultural activities.

A large part of liberal adult education, both within study associations and in folk high schools, is organized in cooperation with popular movements and other organizations which are members of study associations or are responsible for folk high schools.

A certain democratic culture of dialog has been developed within liberal adult education. This means, among other things, tolerance for different opinions, and respect for arguments based on fact and for decisions taken. This is also the basis for internal work at study circles and courses, where participants have great influence in shaping and planning the course.

Liberal adult education is largely financed by the state, counties and municipalities. The government grants to educational associations and folk high schools are distributed by the Swedish National Council of Adult Education.

Beside more traditional activities like study circles, the study associations and folk high schools also run other programs commissioned by the government, local authorities or by organizations.

A SHORT HISTORY

The history of modern liberal adult education in Sweden commenced in the 19th century when the first folk high schools, libraries and lecture associations were founded, study circles started, and magazines and books on current issues were published. The different educational movements developed alongside and in cooperation with the new popular movements.

The first folk high schools were founded as early as in 1868, and the first study associations in the beginning of the 20th century.

Between the wars liberal adult education developed further with more folk high schools and study associations being founded.

The well-known concept "free and voluntary" was coined by the 1944 liberal adult education report. The report emphasized "democratic nurture", which naturally was of highest concern during the growth of totalitarian movements during the 20th century and during the wars.

During the second part of the 20th century liberal adult education expanded, while the government and parliament at the same time changed the conditions for grants for high schools and educational associations. The latest great change was in 1991 with a new Decree on Government Subsidy for liberal adult education (see below), which meant that government-supported liberal adult education became defined by objectives instead of rules.

GOVERNMENT SUPPORT TO LIBERAL ADULT EDUCATION

A fundamental reason for public support to liberal adult education is to foster democratic development in society. The conditions for government grants to liberal adult education are stated in the "Decree on Government Subsidy for Liberal Adult Education":

Decree on Government Subsidy for Liberal Adult Education

Prefatory regulations

1 § In accordance with this decree government subsidies can be granted towards folk high schools and study associations. Issues concerning such subsidies are handled by the Swedish National Council of Adult Education.

The Swedish National Council of Adult Education shall also perform other tasks according to this decree.

The aims of the government subsidy

2 § The government subsidies to liberal adult education shall aim at

1. furthering activities that empower women and men to shape their lives and create commitment for taking part in developing society,
2. strengthening and developing democracy,
3. broadening cultural interest in society, increasing participation in cultural life and furthering the enjoyment of cultural events and people's own creativity.

Activities that aim at filling educational gaps and raising the educational level in society should be given priority, as well as activities that are geared for

educationally, socially and culturally disadvantaged people. Particularly important target groups for government subsidies are people of foreign descent, physically or mentally dysfunctional participants and the unemployed.

The tasks of the Swedish National Council of Adult Education

3 § The Swedish National Council of Adult Education shall decide on whom will be granted government subsidies according to this decree and distribute available funds between them.

The Swedish National Council of Adult Education shall yearly hand in annual financial reports and the basic data for budgeting to the government. In doing so the Council shall follow the regulations and indications imparted by the government.

The Council shall continuously follow up and evaluate the activities in relation to the objectives elaborated under § 2 and the conditions given for government subsidies.

4 § The Council shall, in accordance with rules and regulations issued by the government, supply the government with factual information about the activities and activity reports that are deemed necessary to enable follow-up and evaluation of the activities.

Conditions for government subsidies

5 § The activities shall have the character outlined in the first paragraph of § 2.

Government subsidies must not be used for activities of a commercial character.

Special conditions for government subsidies to folk high schools

6 § Every folk high school must have an accountable board. Two or more folk high schools can share the same board.

General courses, designed mainly for those who lack primary or high school (upper secondary) education, shall each year make up at least 15 per cent of the total volume of activity.

A general course leading to qualifications corresponding to those obtainable in the compulsory school system may only accept students over the age of 18, or students that will reach the age of 18 during the calendar year in which the course commences. This notwithstanding folk high schools may accept students under the age of 18, if that person is attending an individual high school (upper secondary) program.

7 § Teaching shall be free of charge.

Special conditions for government subsidies to study associations

8 § Study circles characterized by joint and regular studies shall constitute the bulk of the activities.

Each study circle or cultural activity should be led by a leader authorized by a local branch of a study association.

Decisions on government subsidies

9 § Decisions on government subsidies must state the amount of money, conditions linked to the subsidies and rules for disbursement of the money.

...

DISTRIBUTION OF GOVERNMENT SUBSIDIES IN 2003

The distribution of government subsidies for liberal adult education by the Swedish National Council for Adult Education in 2003:

<u>Purpose</u>	SEK
Study associations	1 280 633 000
General subsidy	1 275 433 000
The Swedish National Federation of Study Associations	5 200 000
Folk High Schools	1 222 105 000
General subsidy	930 377 000
Special education effort	285 143 000
Further training for folk high school personnel	840 000
The Information Service of the Folk High Schools	5 745 000
The Swedish National Council of Adult Education	16 550 000
TOTAL	2 519 288 000
Special subsidies	120 000 000
to the folk high schools for giving courses to people who have been unemployed for a long period.	

STUDY ASSOCIATIONS

Today there are ten study associations receiving government grants (see page 9). Each study association has a more or less marked profile depending on which popular movements/organizations are members in the association.

Altogether the ten study associations have over 250 member organizations. The study associations also have central cooperation agreements with another 80-plus organizations and cooperate locally with a number of different associations.

The study circle is the most common form of activity characterizing the study associations. The study circles offer different subjects according to the wishes of the participants etc. Every year about 320 000 circles are organized all over the country. (Since many people participate in more than one circle per year the real number of participants is estimated to be between one and a half million to two million.)

Cultural programs of different kinds constitute the second largest area of activity of the study associations. Over 200 000 programs are arranged every year with around 15 000 000 visitors/participants.

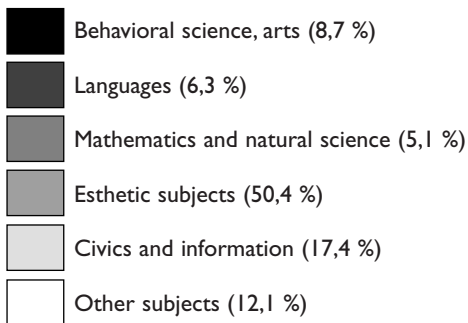
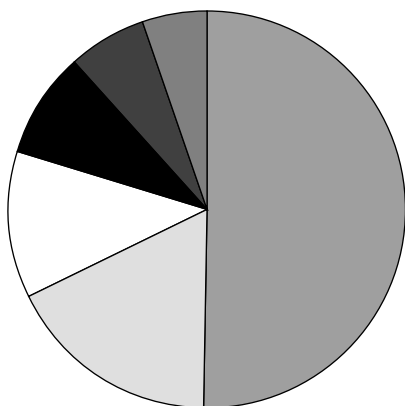
During 2002 the ten study associations organized more than 56 000 arrangements with more than 600 000 participants within the field called other liberal adult education activities.

Each study association consists of a number of units (local departments) and local offices, in total more than 500. These organize the study circles, cultural programs, other liberal adult education activities etc – partly for anyone interested, partly for members of each study association's member organizations.

DISTRIBUTION OF SUBJECTS IN THE STUDY CIRCLES

Esthetic subjects constituted almost half of the study circle activities in 2002, according to the number of study hours. There were only minor changes compared to the previous year.

The total number of study hours were 1 3412 000 in 2002, equivalent to ca 317 000 study circles.



Annual 2002 report of the study associations

Study circles	Circles	Participants	Women	Study hours
2002	316 843	2 597 518 *	1 499 334	13 412 984
2001	320 356	2 661 935 *	1 521 820	13 239 372
Cultural programs	Events	Participants	Contributers	
2002	214 762	15 590 484	1 060 032	1 567 763
2001	207 925	15 454 381	1 020 370	1 517 853
Other activities	Events	Participants	Women	Study hours
2002	65 186	720 841	374 887	1 210 987
2001	56 329	623 600	314 445	1 024 418

* Considering the fact that a large number of people participate in several circles the estimated figure of participants in 2002 is between 1,5 and 2 million (during 2002 there were eleven study associations).

Except for these reported activities, supported by government subsidies, study associations also arrange studies on behalf of various institutions, organisations, companys etc.

10 STUDY ASSOCIATIONS

ABF (Workers' Education Association)	08-613 50 00
Folkuniversitetet (Folk University)	08-679 29 50
NBV (The Educational Association of the Sobriety Movement)	08-672 61 00
Sensus studieförbund (Sensus Study Association)	08-727 17 50
Sisu Idrottsutbildarna (Swedish Sport Conf. Adult Education Association)	08-605 60 00
Studieförbundet (The Study Promotion Association)	08-545 707 00
Studieförbundet Bilda (The Educational Association Bilda)	08-727 17 10
Studieförbundet Medborgarskolan (The Citizens' Adult Education Association)	018-5695 00
Studieförbundet Vuxenskolan (Adult Education Association)	08-587 686 00
TBV (The Educational Association of Professional Employees)	08-782 93 00

Study circle hours through the general government grant:

Fiscal year	General subsidy	Number om study hours
1998	1 140 299 500	12 458 081
1999	1 182 397 100	12 852 823
2000	1 197 684 000	13 181 992
2001	1 214 791 000	13 239 372
2002	1 245 859 000	13 412 984

Note. Besides the study circle activities, the study associations arrange cultural programs and other activities.

FOLK HIGH SCHOOLS

Altogether there are 147 folk high schools around the country today. The folk high school is a school for adults with a lowest age limit of 18 years for the general courses. The schools give priority to applicants with little schooling.

The folk high school is free to shape its courses according to the special interests and profile of the school, thereby giving the students great opportunities for influencing the direction and contents of the courses in accordance with earlier knowledge, interests, and needs.

Characteristic of the education is theme studies and projects. In these the social and work experiences of the participants are a great resource.

The folk high schools give courses at different levels and with different aims. The long-term courses last from one semester up to one or several years. All education is free of charge and government grants can be applied for.

The general course, which qualifies a person for university studies, is an important part of the educational system, and is available at all folk high schools. Each semester there are more than 18 000 students enrolled in the general course.

The folk high schools also offer specialized courses, e.g. in music, media, arts and handicraft, theater and languages, in which a greater part of the time is devoted to the special area of one's choice. Some of these courses are vocational: recreation leader, drama teacher, journalist, cantor etc. The number of participants in the special courses is about 11 000.

Also the folk high schools have about 80 000 students taking part in short-term courses of different kinds each semester.

Yearly activities of the 147 folk high schools in 2002

TYPE OF COURSE	NUMBER OF WEEKS		PARTICIPANTS		WOMEN	
	2002	2001	VT-02	HT-02	VT-02	HT-02
1 General course	219 721	225 882	6 968	6 883	4 525	4 511
2 Special course	371 150	375 936	11 026	11 492	7 326	7 610
Total long-term courses	590 871	601 818	17 994	18 378	11 851	12 121
3 Short courses	106 325	111 087	78 539	81 865	44 564	46 927
Study circles	5 136	5 247	1 892	1 622	1 208	1 078
4 Special efforts	299 479	321 778	9 299	8 198	5 863	5 122
Total 1-4	1 001 811	1 039 930	107 724	110 060	63 486	65 248

Note: These folk high schools courses are financed by government grants. The schools also give courses financed by other means.

147 FOLK HIGH SCHOOLS

Norrbottnens län:		Västanvik	0247-64100
Framnäs	0911-231100		
Kalix	0923-66610	Gävleborgs län:	
Malmfälten	0980-67500	Bollnäs	0278-38900
Sunderby	0920-266600	Forsa	0650-541100
Sverigefinska	0922-68800	Färnebo	0291-20275
Tornedalen	0927-10820	PRO	0291-21220
Älvsby	0929-72300	Västerberg	0290-34040
Västerbottnens län:		Värmlands län:	
Dalkarlså	0934-30495	Geijerskolan	0552-30250
Edelvik	0914-10160	Ingesund	0570-38550
Medlefors	0910-57500	Klarälvdalen	0563-25200
Solvik	0910-732000	Kristinehamn	0550-39250
Storuman	0951-77730	Kyrkerud	0573-13340
Strömbäck	090-42600	Molkom	0553-10004
Vindeln	0933-13600		
Jämtlands län:		Uppsala län:	
Birka	063-147400	Nordens Biskops-	
Bäckedal	0680-16670	Arnö	0171-52260
Hålland	0647-665500	Wik	018-561080
Västernorrlands län:		Stockholms län:	
Hampnäs	0660-266700	Alma	08-4621100
Hola	0612-85600	Birkagården	08-52463330
Härnösand	0611-554600	Bosön	08-6056629
Mellansel	0661-654400	Botkyrka	08-53191505
Ålsta	0691-31250	Dalarö	08-50490100
Dalarnas län:		Hagaberg	08-55091000
Brunnsvik	0240-667300	Jakobsberg	08-58430380
Fornby	0243-239550	Kageholm	08-56022200
Företagarnas	0247-13540	Lidingö	08-6362300
Malung	0280-14300	Lillsved	08-54138530
Mora	0250-71007	Långbro	08-880530
Sjövik	0226-67800	Långholmen	08-6581630
		MKFC Sthlm	08-4747660
		Runö	08-55538000

S:ta Birgitta	08-7021606	Dalsland	0528-75880
Sigtuna	08-592 583 00	FiA-fhsk	
Skarpnäck	08-683 18 30	i Angered	031-483444
Skeppsholmen	08-6792800	Finska	031-3315066
Stadsmissionen	08-5630830	Fristad	033-236800
Sundbyberg	08-4453900	Grebbestad	0525-19920
Södertörn	08-500 207 50	Göteborg	031-769 76 00
Tollare	08-50568600	Helliden	0502-17800
Vårdinge By	0158-23058	Helsjön	0320-80620
Väddö	0176-52800	Hjo	0503-32300
Västmanlands län:		Hjälmered	0322-13969
Hästsporten	0220-45100	Kvinnofolkhög-	
Skinnskatte-		skolan	031-7756500
berg	0222-44400	Ljungskile	0522-68 69 00
Tärna	0224-21230	Nordiska	0303-206200
Västerås	021-140705	Vara	0512-57970
Örebro län:		Wendelsberg	031-3380530
Fellingsbro	0581-89100	Viskadalen	0320-18300
Hällefors	0591-643 90	Östergötlands län:	
Karlskoga	0586-64600	Bona	0141-209580
Kävesta	019-602 49 50	Liljeholmen	0494-797 00
Örebro	019-6029700	Lunnevad	013-234900
Södermanlands län:		Marieborg	011-219600
Eskilstuna	016-513110	Mo Gård	0122-248 00
Kjesäter	0151-51 86 00	Vadstena	0143-13710
Nyköping	0155-292080	Valla	013-355580
Röda Korset	0159-36700	Gotlands län:	
Stensund	0156-53200	Gotland	0498-203650
Åsa	0157-69500	Kalmar län:	
Västra Götalands län:		Gamleby	0493-13100
Arbetar-		Högalid	0480-84480
rörelsen	031-7119191	Oskarshamn	0491-768 100
Axevalla	0511-26970	Vimmerby	0492-14300
Billströmska	0304-676570	Öland	0485-564400

Jönköpings län:

Braheskolan	0390-56600
Mariannelund	0496-21550
Mullsjö	0392-37400
Sommen- bygden	0140-53790
Södra Vätter- bygden	036-306900
Sörängen	0380-373800
Vieback	0380-663000
Värnamo	0370-379000
Ädelfors	0383-57100

Kronobergs län:

Grimslöv	0470-763700
Markaryd	0433-74511
S:t Sigfrid	0470-724082

Hallands län:

Katrineberg	0346-57500
Löftadalen	0340-655000

Blekinge län:

Blekinge	0457-731860
Jämshög	0454-46340
Litorina	0455-367600
Valjeviken	0456-15115

Skåne län:

Eslöv	0413-66300
Fridhem	0418-446000
Furuboda	044-7814600
Glimåkra	044-44800
Hvilan	040-464400
Hyllie Park	040-375950
Kvarnby	040-6808570
Malmö	040-6715100
Nordvästra Skåne	0431-432010
S:ta Maria	040-223113
Skurup	0411-40587
Sundsgården	042-193800
Önnestad	044-7850100
Örenäs	0418-70230
Österlen	0417-78440
Östra Grevie	040-556200

THE SWEDISH NATIONAL COUNCIL OF ADULT EDUCATION



The Swedish National Council of Adult Education was founded in 1991 and is a non-profit organization with three members: The National Federation of Study Associations (FBF), The Federation of County Councils (Lf), and The Interest Organization for Popular Movement Folk High Schools (RIO).

The Council distributes grants to the study associations and folk high schools, submits budget and fiscal reports, follows up and evaluates the popular-education activities. The Council is entrusted with these tasks by the government and parliament.

The Swedish National Council of Adult Education also works with the following on behalf of its members:

- ♥ monitoring liberal adult education policies,
- ♥ information,
- ♥ coordination of international contacts
- ♥ administration of the Liberal Adult Education Net (see page 23).



The Information Service of the Swedish Folk High Schools (FIN) is part of the Swedish National Council of Adult Education and is a joint information center for the folk high schools, which is responsible for general and collected data on all 147 folk high schools (www.folkhogskola.nu). FIN produces and distributes course catalogs and information material on the folk high schools and gives information on folk high school studies and counselling.

THE MEMBERS OF THE SWEDISH NATIONAL COUNCIL OF ADULT EDUCATION

The members of the Swedish National Council of Adult Education are:

The National Federation of Study Associations (F_{BF}), which is an interest organization for the eleven study associations.

The Interest Organization for Popular Movement Folk High Schools (R_{IO}) with popular movements and other organizations as principals.

The Federation of County Councils (L_f), representing the folk high schools which are run by county councils or regions.

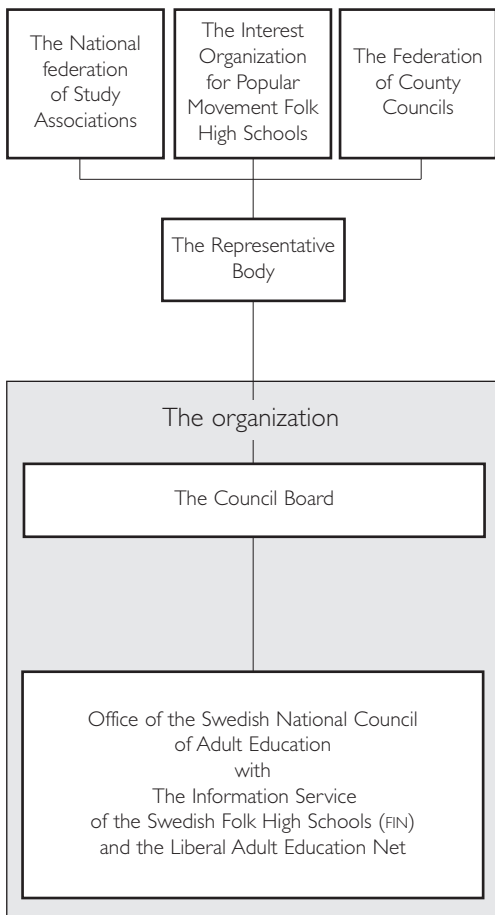
THE ORGANIZATION OF THE SWEDISH NATIONAL COUNCIL OF ADULT EDUCATION

The Representative Body, the highest executive body which meets yearly.

The Council Board is elected for two years and operates the offices (see next page).

The Information Service of the Swedish Folk High Schools and the Liberal Adult Education Net are also parts of the **Office of the Swedish National Council of Adult Education**.

The members



THE BOARD

ANDERS LJUNGGREN (Chairman)

RIGMOR BREIDEMALM

BERNT GUSTAVSSON

KENT JOHANSSON

LEIF LINDE

MARIE LINDER

WALTER RÖNMARK

MAJLENE WESTERLUND PANKE

SVERKER ÅGREN.

Additional members are PER OLOF ÖHRN, Interest Organization of Popular Movement Folk High Schools, ELSIE BÄCKLUND, Swedish National Federation of Study Associations, and ULF JOHANSSON, Federation of County Councils.

THE OFFICE (+46 8 412 48 00)

BRITTEN MÅNSSON-WALLIN, Administrative Director.

LASSE MAGNUSSON, Sec. of Liberal Adult Education.

TOMAS ÖSTLUND, Administrative Secretary.

PAUL NORÉN, Administration and Finance.

LOTTA RAGELIUS, Human Resources.

ANNE-CHRISTINE UTTERSTRÖM, R&D Secretary.

ANNA-CARIN BYLUND, Study Association Secretary.

SIGNILD HÅKANSSON, Folk High School Secretary.

KARIN FRIBORG, Service.

ANNIKA BLOM, Secretary/Reception.

BJÖRN GAREFELT, IT-strategy.

TORE PERSSON, the Popular Education Net.

Folkhögskolornas informationstjänst (FIN):

INGRID BRUNDIN, Information Officer.

CARINA LINDBLAD, Information Assistant.

AGNETA WALLIN, Councillor/Web master.

PER ÅMAN, Clerk.

WWW.FOLKBILDNING.NET

The Liberal Adult Education Net is a common digital meeting place for study associations and folk high schools – open to employees, elected representatives and participants. The net functions as a meeting place, an information site, a conference hall and a study centre.

Folk high schools and study associations, and the individual users, are using the net for communication and cooperation within the Swedish liberal adult education. The net is also used as a platform for internal networks (intranet) for schools and associations and as a pedagogical tool, for example to arrange different kinds of distance study programs.

Further information: www.folkbildning.net

ASN – ADULT STUDY NET

The Liberal Adult Education Net also has become a model for ASN, a European ICT adult education network project, with the purpose of spreading collaborative and group based use of information and communication technology (ICT) in adult education.

This will chiefly be done through testing national, regional and local ICT networks for studies, meetings/discussions and information and through testing the conditions for a European ICT network for adult education

The target groups for the project activities are different categories of adult learners and teachers/monitors. Particular emphasis is going to be put on enabling also those groups with little or no computer skills to take part, groups that normally find it difficult to attend traditional studies.

ADRESSES

The Swedish National Council of Adult Education

Box 730, 101 34 Stockholm tel: +46 8 412 48 00
fbr@folkbildning.net fax: +46 8 21 88 26
www.folkbildning.se

The Information Service of the Folk High Schools

Box 730, 101 34 Stockholm tel: +46 8 796 00 50
fin@folkbildning.net fax: +46 8 21 88 26
www.folkhogskola.nu

The Liberal Adult Education Net

Box 730, 101 34 Stockholm tel: +46 8 412 48 00
info@folkbildning.net fax: +46 8 21 88 26
www.folkbildning.net

The National Federation of Study Associations

Box 730, 101 34 Stockholm tel: +46 8 412 48 50
info@studieforbunden.nu fax: +46 8 21 88 26
www.studieforbunden.nu

The Interest Organization of Popular Movement Folk High Schools

Box 730, 101 34 Stockholm tel: +46 8 412 48 90
rio@folkbildning.se fax: +46 8 21 88 26
www.folkbildning.net/~rios.hemsida

The Federation of County Councils

Box 70491, 107 26 Stockholm tel: +46 8 452 72 00
landstingsforbundet@lf.se fax: +46 8 452 72 10
www.lf.se

Please also see the telephone numbers of the different study associations (p. 13), folk high schools (p. 16-18), the county councils of adult education (p. 25) and to the office of the Swedish National Council of Adult Education (p. 22).

THE COUNTY COUNCILS OF ADULT EDUCATION

The main task of the County Councils of Adult Education is to promote and coordinate liberal adult education, as well as acting as regional bodies of the Swedish National Council of Adult Education. Members consist of study associations, folk high schools and other regional cultural institutions.

Stockholms läns bildningsförbund	+46 8 641 90 65
Uppsala läns bildningsförbund	+46 18 15 54 30
Länsbildningsförbundet Sörmland	+46 157 511 55
Östergötlands bildningsförbund	+46 13 31 52 75
Jönköpings läns bildningsförbund	+46 36 19 00 40
Kronobergs läns bildningsförbund	+46 455 305 140
Kalmar läns bildningsförbund	+46 492 158 91
Gotlands bildningsförbund	+46 498 21 83 61
Blekinge läns bildningsförbund	+46 455 305 140
Skånes bildningsförbund	+46 46 38 40 37
Hallands bildningsförbund	+46 346 17 77 70
Västra Götalands bildningsförbund	+46 511 134 65
Folkbildarna i Värmland	+46 54 101 040
Örebro läns bildningsförbund	+46 19 611 21 75
Västmanlands länsbildningsförbund	+46 21 18 35 71
Dalarnas bildningsförbund	+46 243 678 32
Gävleborgs läns bildningsförbund	+46 26 65 31 20
Bildningsförbundet Mittnorrand	+46 63 18 13 13
Västerbottens läns bildningsförbund	+46 90 12 68 00
Norrbotens bildningsförbund	+46 920 680 65

LINKS

More information can be found on Internet:

❑ The Swedish National Council of Adult Education: www.folkbildning.se

❑ The Information Service of the Folk High Schools, with links to every folk high school and information about courses: www.folkhogskola.nu

❑ The Liberal Adult Education Net: www.folkbildning.net

❑ The Pedagogical Resources of Liberal Adult Education Net: www.resurs.folkbildning.net

❑ The National Federation of Study Associations, with links to each study association: www.studieforbunden.nu

❑ The Interest Organization of Popular Movement Folk High Schools: www.folkbildning.net/~rios.hemsida

❑ Mimer, The National Program for Research on Liberal Adult Education: www.liu.se/mimer

❑ National Center for Flexible Learning: www.cfl.se

❑ The Government Institute for Special Educational Support, for the disabled: www.sisus.se

❑ Swedish Educational Radio: www.ur.se

LIBERAL ADULT EDUCATION IN SWEDEN

Ten study associations which every year all over the country organize:

- ♥ about 320 000 study circles with more than two and a half million participants,
- ♥ over 215 000 cultural programs with more than 15 million visitors/participants.

147 folk high schools which each semester have:

- ♥ about 28 000 participants in long-term courses,
- ♥ about 80 000 participants in short courses.

THE SWEDISH NATIONAL COUNCIL
OF ADULT EDUCATION

Box 730, 101 34 Stockholm
Tel: +46 8 412 48 00, fax: +46 8 21 88 26
E-post: fbr@folkbildning.net
www.folkbildning.se